

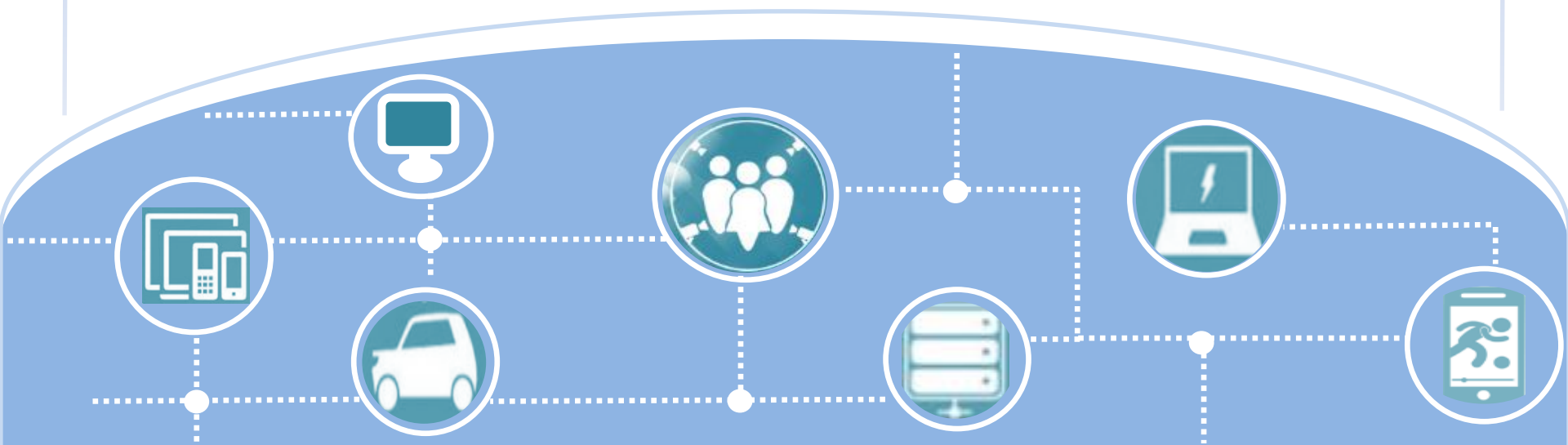


嘉彰集團  
*Chia Group*

TWSE : Chia Chang 4942

# CHIA CHANG CO., LTD. 2020 Investor Conference

2020.8.17





# Safe Harbor Notice

Chia Chang CO., LTD's statements of its current expectations are forward-looking statements subject to significant risks and uncertainties and actual results may differ materially from those contained in the forward-looking statements.

Except as required by law, we undertake no obligation to update any forward-looking statement, whether as a result of new information, future events, or otherwise.



# Agenda



**Company Profile**



**Financial Overview**



**Q & A**

# Company Profile



## About Chia Group

- \* Established Sep 1985
- \* Capital: TWD 1,424 Million



## IPO

- \* IPO : Taiwan 2011  
(TSE:4942)



## Group Employee

- \* 3,482 worldwide staff



## Main Product

- \* Stamping / Surface Treatment
- \* Design & Manufacture of precision tooling
- \* Design & Manufacture of mechanical parts





# Global Operations

1985



**Chia Chang  
(headquarter)**

Main Product :  
TV 、 NB 、 Tablet 、  
Monitor 、 Networking  
、 Automobile

2001



**Chia Chang  
(Suzhou)**

Main Product :  
TV 、 NB 、 Tablet 、  
Monitor 、 Automobile

2006



**Chia Chang  
(Ningbo)**

Main Product :  
NB 、 Monitor

2011



**Chia Chan  
(Nanjing)**

Main Product :  
NB 、 Tablet 、  
Monitor 、 Automobile

2017



**Chia Chang  
(Chongqing)**

Main Product :  
NB 、 Monitor





# Product



TV



NB



Tablet



Monitor



Automobile



Networking

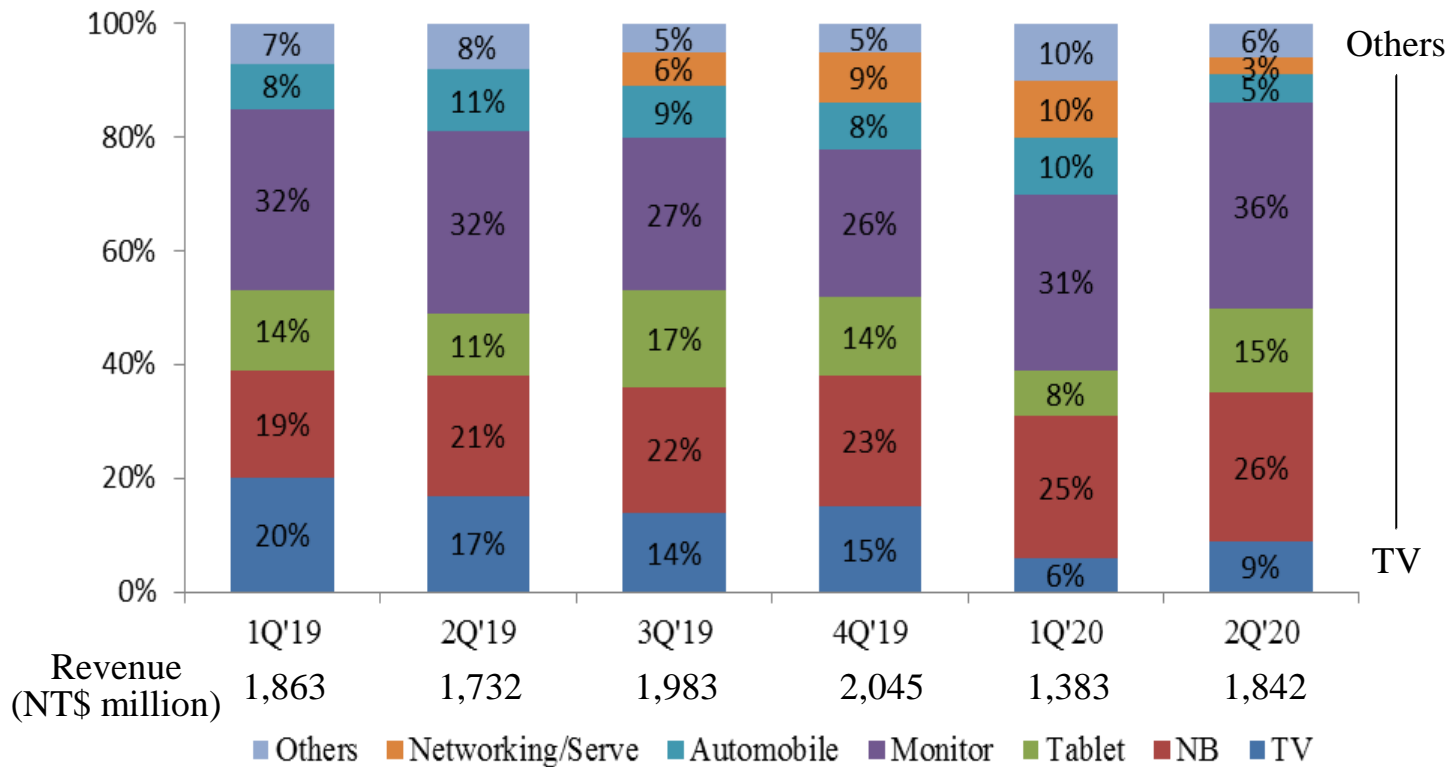


Server/Data Center

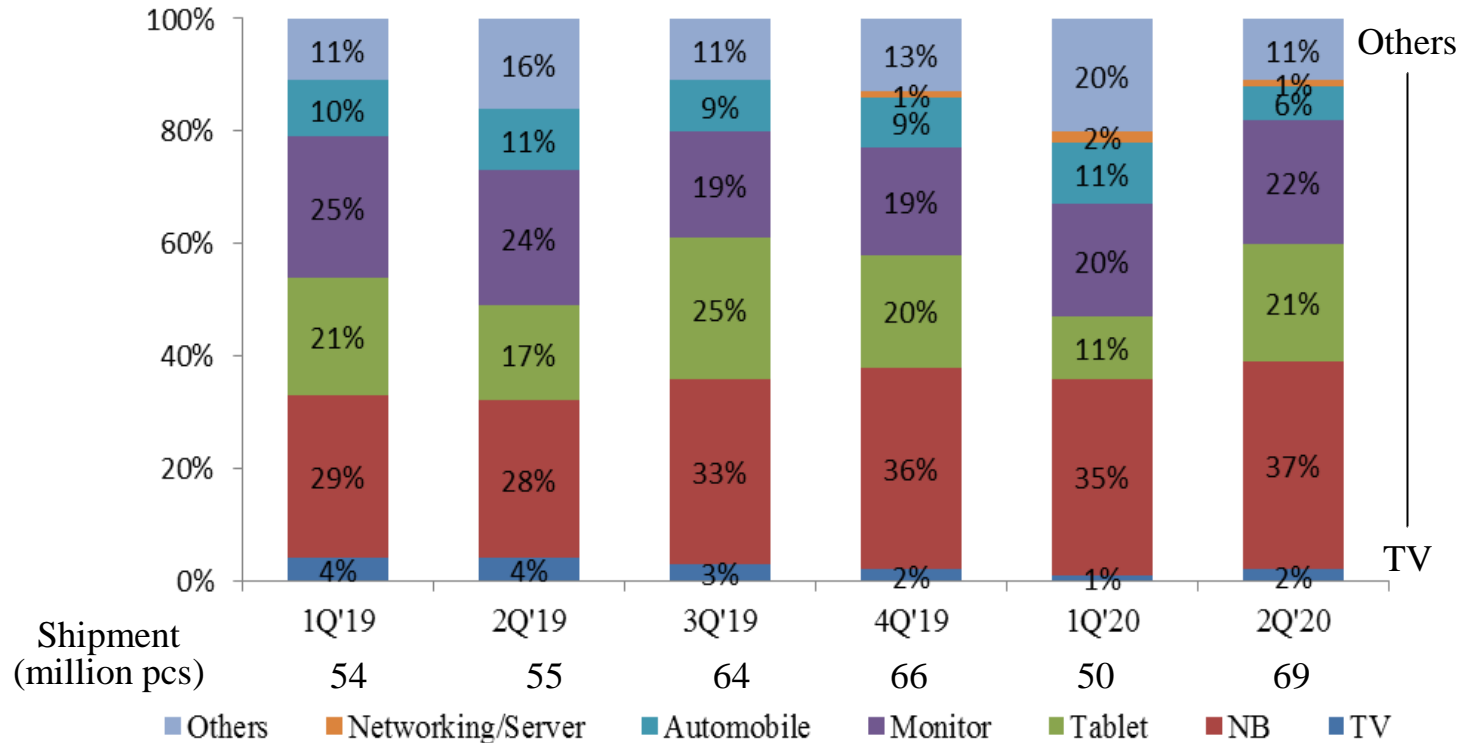


IP Camera

# Sales Breakdown by Application (Revenue)



# Sales Breakdown by Application (Quantity)





# Balance Sheets

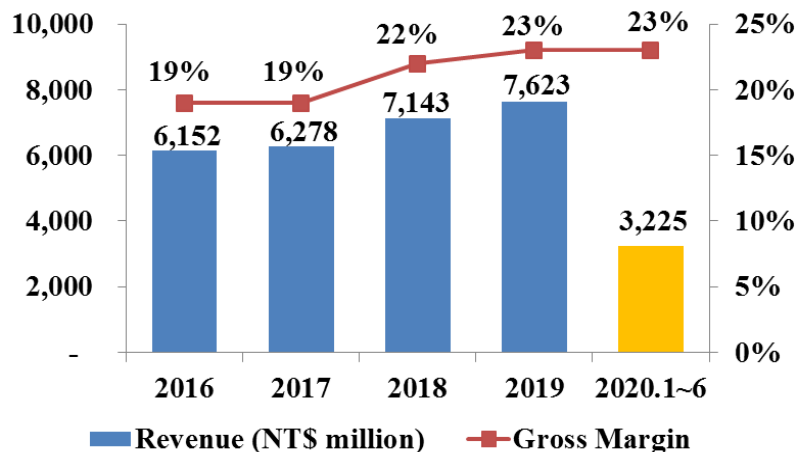
(In NT\$ thousand)	2020.6.30		2019.6.30	
	Amount	%	Amount	%
Total current assets	7,780,852	80%	7,533,829	79%
Cash and cash equivalents	1,662,696	17%	1,414,890	15%
Notes & Accounts receivable, net	2,789,884	29%	2,977,133	31%
Current inventories	402,404	4%	343,299	4%
Other current financial assets	2,478,922	25%	2,354,251	24%
Total non-current assets	1,954,674	20%	2,132,438	21%
Property, plant and equipment	1,384,797	14%	1,476,504	15%
<b>Total assets</b>	<b>9,735,526</b>	<b>100%</b>	<b>9,666,267</b>	<b>100%</b>
Total current liabilities	2,613,512	27%	2,398,718	25%
Notes & Accounts payable	1,309,116	14%	1,353,899	14%
Other payables	812,087	8%	756,571	8%
Total non-current liabilities	229,208	2%	233,653	2%
Deferred tax liabilities	201,227	2%	202,010	2%
<b>Total liabilities</b>	<b>2,842,720</b>	<b>29%</b>	<b>2,632,371</b>	<b>27%</b>
<b>Total equity</b>	<b>6,892,806</b>	<b>71%</b>	<b>7,033,896</b>	<b>73%</b>

# Statements of Comprehensive Income

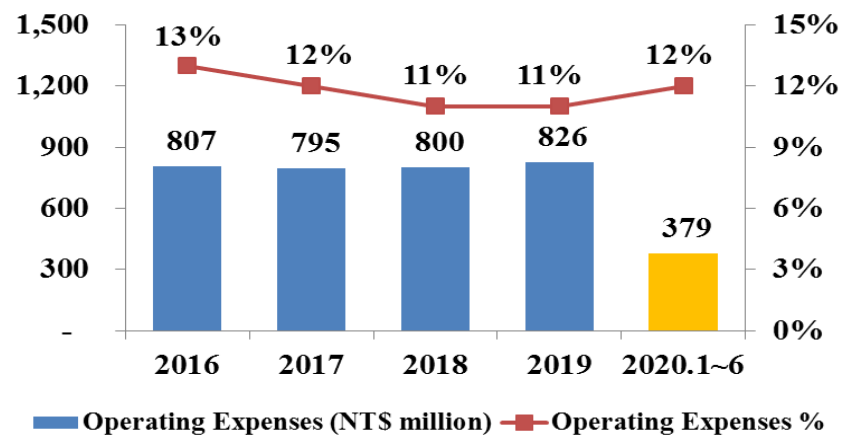
(In NT\$ thousand)	2020.1~6		2019.1~6		YoY %
	Amount	%	Amount	%	
Net Sales	3,224,709	100%	3,595,115	100%	(10%)
Cost of Goods Sold	2,490,912	77%	2,810,234	78%	(11%)
<b>Gross Margin</b>	<b>733,797</b>	<b>23%</b>	<b>784,881</b>	<b>22%</b>	<b>(7%)</b>
Operating Expenses	379,277	12%	391,389	11%	(3%)
<b>Operating Income</b>	<b>354,520</b>	<b>11%</b>	<b>393,492</b>	<b>11%</b>	<b>(10%)</b>
Non-operating Income	77,978	3%	80,916	2%	(4%)
<b>Income before Tax</b>	<b>432,498</b>	<b>14%</b>	<b>474,408</b>	<b>13%</b>	<b>(9%)</b>
Income Tax Expenses	111,148	4%	186,683	5%	(40%)
<b>Net Income</b>	<b>321,350</b>	<b>10%</b>	<b>287,725</b>	<b>8%</b>	<b>12%</b>
<b>Basic EPS (NT\$)</b>	<b>2.26</b>		<b>2.02</b>		<b>12%</b>

# Financial Highlights

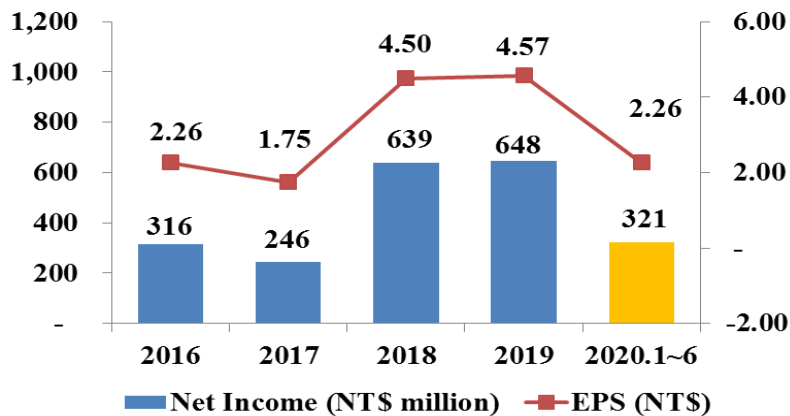
## Revenue/Gross Margin



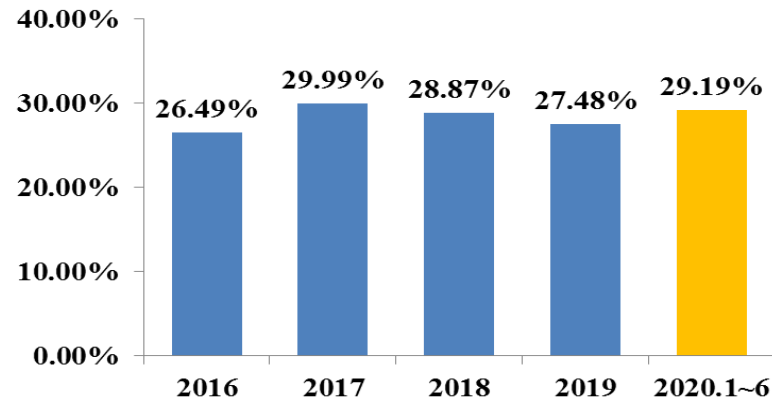
## Operating Expenses/Operating Expenses%



## Net Income/EPS



## Debit Ratio





# Dividend Distribution

	2014	2015	2016	2017	2018	2019
EPS (NT\$)	2.59	(3.49)	2.26	1.75	4.50	4.57
Dividend p/s (NT\$)	1.50	1.25	1.50	1.20	2.50	2.50
Payout ratio (%)	58%	NA	66%	69%	56%	55%
Cash Dividend Yield (%)	4.25%	4.99%	6.45%	4.84%	9.29%	6.33%

Note:

(1) Cash Dividend Yield = Cash Dividends Per Share/Average Market Price



# Thank You

<http://www.chiachang.com>

[ir@chiachang.com](mailto:ir@chiachang.com)

🔍 Chia Chang 4942

