



嘉彰集團  
*Chia Group*

Q Chia Chang 4942

# CHIA CHANG CO., LTD.

## 2019 Investor Conference

2019.10.30





# Safe Harbor Notice

Chia Chang CO., LTD's statements of its current expectations are forward-looking statements subject to significant risks and uncertainties and actual results may differ materially from those contained in the forward-looking statements.

Except as required by law, we undertake no obligation to update any forward-looking statement, whether as a result of new information, future events, or otherwise.



# Agenda



**Company Profile**



**Financial Overview**



**Vision**



**Q & A**



# Company Profile



## About Chia Group

- \* Established Sep 1985
- \* Founder : C.H. Chen
- \* Chairman : Roger Sung
- \* Capital: TWD 1,424 Million
- \* IPO : Taiwan 2011 (TSE:4942)



## Group Employee

- \* 3,085 worldwide staff



## Main Product Range

- \* Stamping / Surface Treatment
- \* Design & Manufacture of precision tooling
- \* Design & Manufacture of mechanical parts



# Global Operations



**Chia Chang (Chongqing) /2017**  
Main Product : NB 、 AIO



**Quan Rui (Dongguan )/2007**  
Main Product : TV 、 NB 、 Monitor



**Chia Chang (headquarter)/1985**  
Main Product : TV 、 NB 、 Tablet 、  
Monitor 、 Automobile 、 Network



**Chia Chan (Nanjing)/2011**  
Main Product : NB 、 Tablet 、  
Monitor 、 Automobile



**Chia Chang (Suzhou)/2001**  
Main Product : TV 、 NB 、 Tablet 、  
Monitor 、 Automobile



**Chia Chang (Ningbo)/ 2006**  
Main Product : NB 、 Monitor



# Product



TV



NB



Tablet



Monitor



Automobile



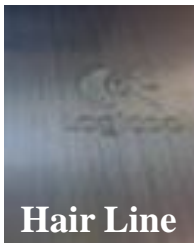
Network



Server/Data Center



IP Camera



Hair Line



Sandblasting



Laser Engraving



Diamond Cutting



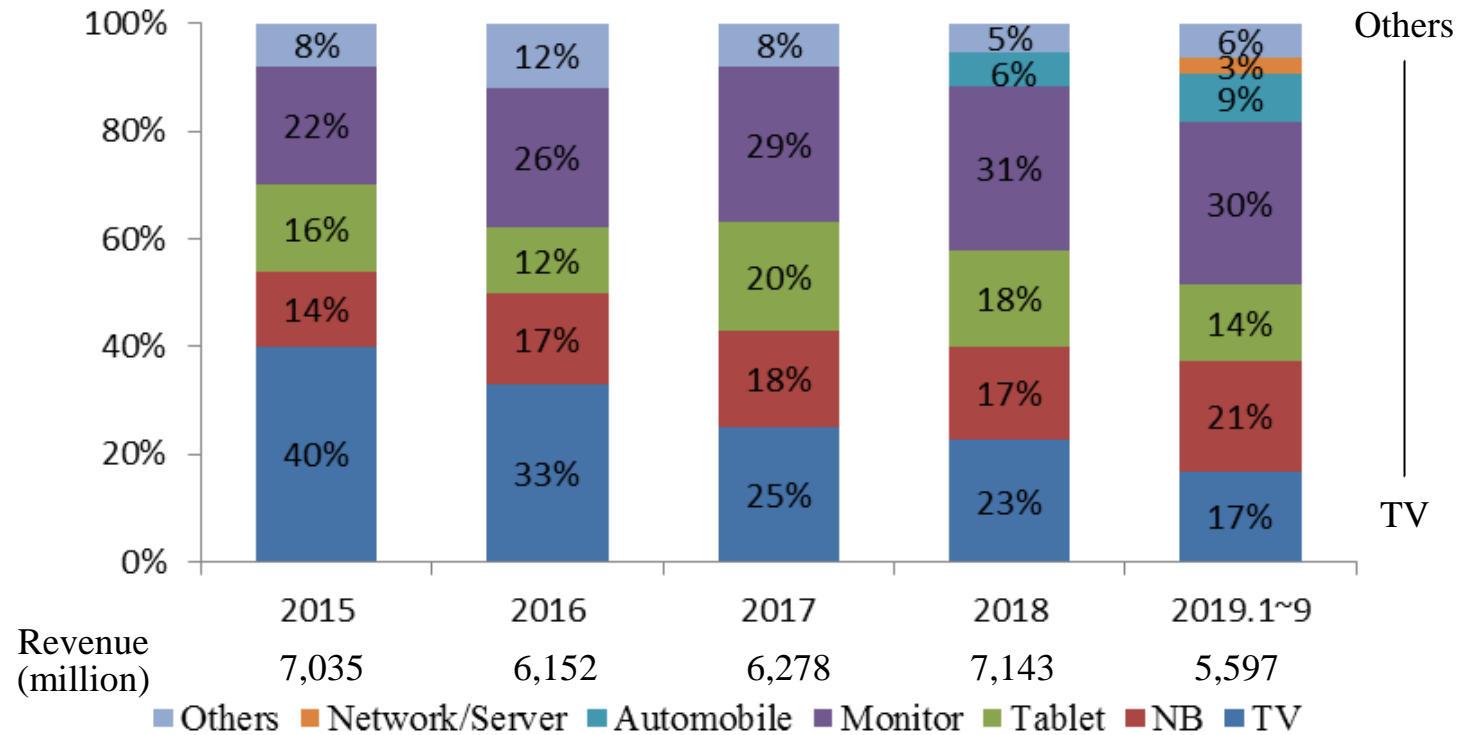
Electroplating



Anodizing

Surface Treatment

# Sales Breakdown by Application (Revenue)

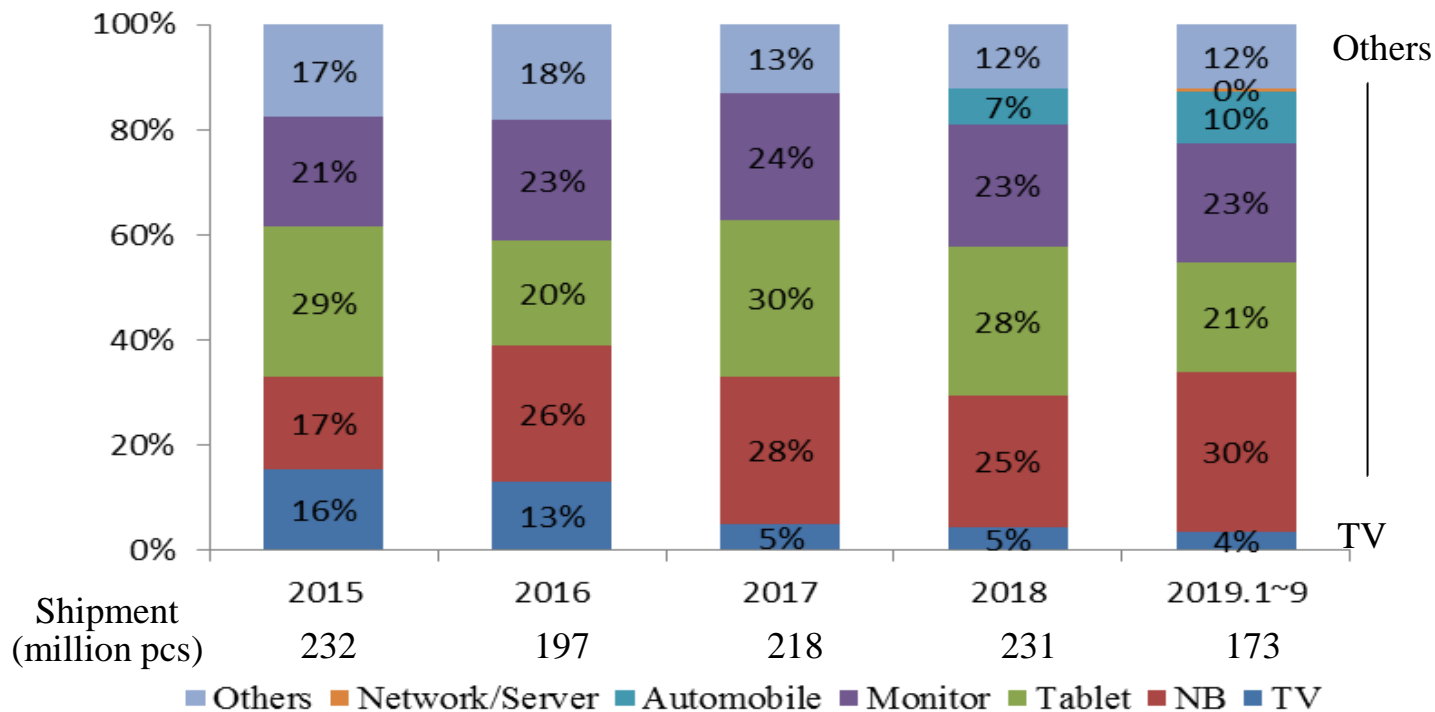


Note:

(1) 2015~2018 consolidated revenue are audited/reviewed by Deloitte.

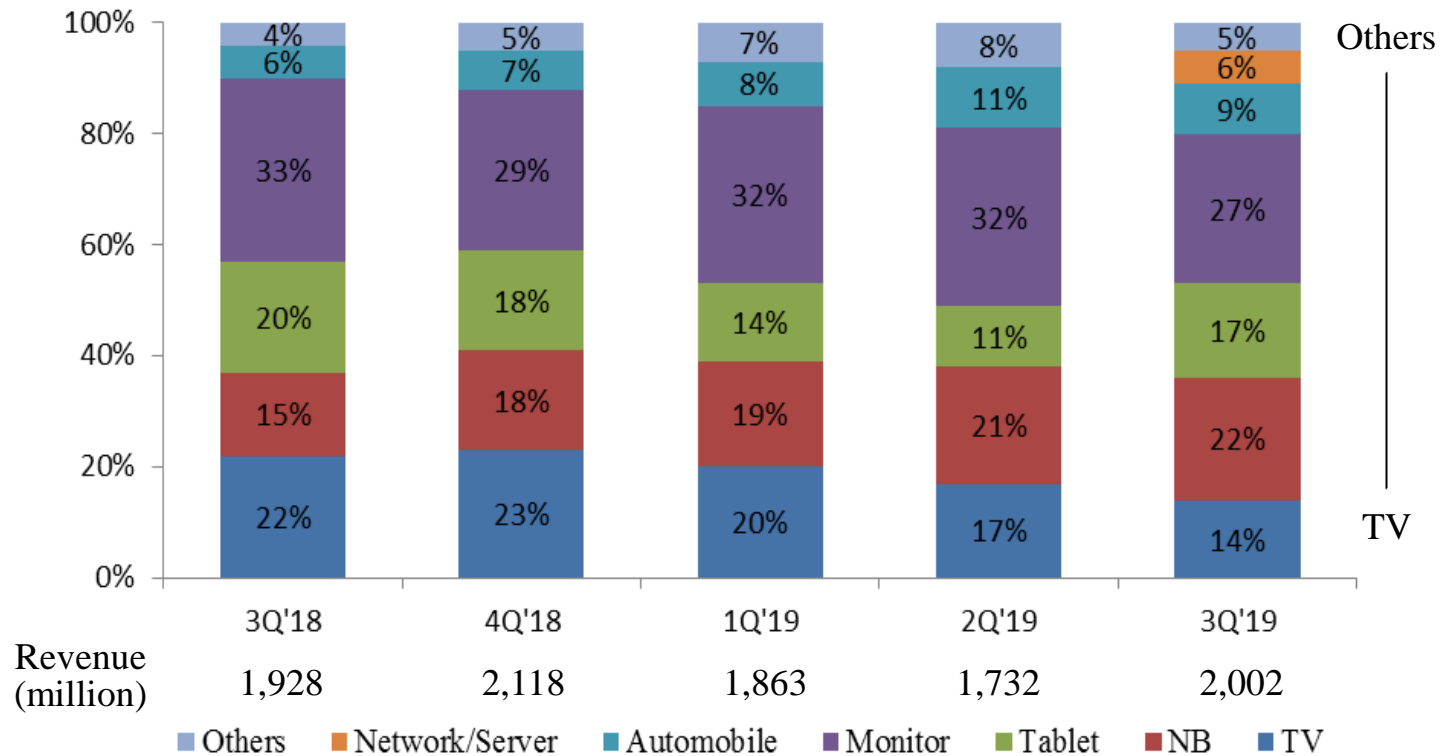
(2) 2019.1~9 revenue : all figures are unaudited

# Sales Breakdown by Application (Quantity)





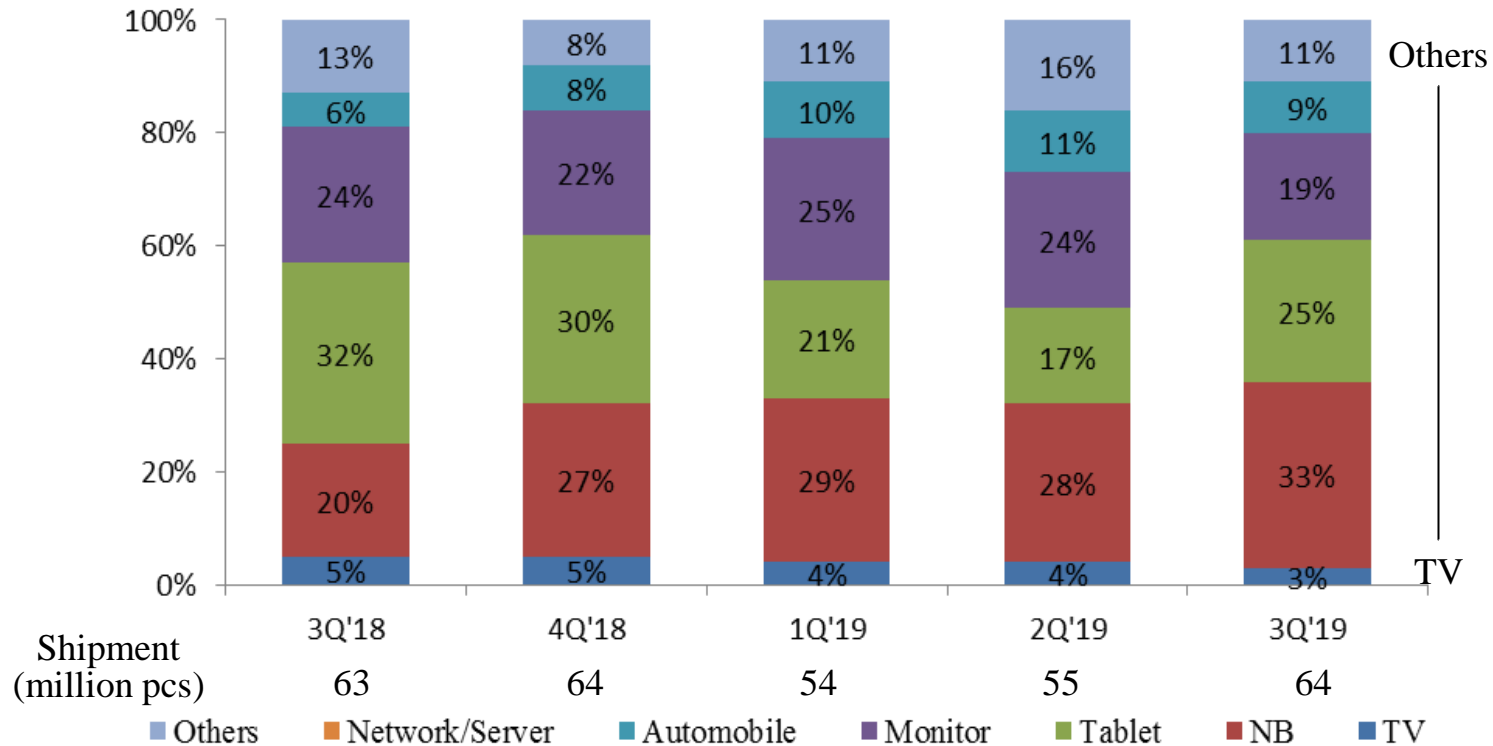
# Sales Breakdown by Application (Revenue)



Note:

- (1) 3Q'18~2Q'19 consolidated revenue are audited/reviewed by Deloitte
- (2) 3Q'19 revenue : all figures are unaudited

# Sales Breakdown by Application (Quantity)



# Balance Sheets

(In NT\$ millions)	2019.6.30		2018.12.31		2018.6.30	
	Amount	%	Amount	%	Amount	%
Total Current Assets	7,534	79%	7,819	79%	7,315	78%
Cash & Cash Equivalents	1,415	15%	1,306	13%	1,397	15%
Notes & Accounts Receivable	2,977	31%	3,441	35%	2,775	29%
Other Non-current Financial Assets	2,354	24%	2,065	21%	2,156	23%
Total Non-current Assets	2,132	21%	2,037	21%	2,061	22%
Net PP&E	1,477	15%	1,494	15%	1,508	16%
<b>Total Assets</b>	<b>9,666</b>	<b>100%</b>	<b>9,856</b>	<b>100%</b>	<b>9,376</b>	<b>100%</b>
Current Liabilities	2,399	24%	2,643	27%	2,382	26%
Non-current Liabilities	233	3%	202	2%	205	2%
<b>Total Liabilities</b>	<b>2,632</b>	<b>27%</b>	<b>2,845</b>	<b>29%</b>	<b>2,587</b>	<b>28%</b>
<b>Total Shareholders' Equity</b>	<b>7,034</b>	<b>73%</b>	<b>7,011</b>	<b>71%</b>	<b>6,789</b>	<b>72%</b>

Notes:

- (1) Weighted average outstanding shares were 142,368 thousand units
- (2) Consolidated financial statements are audited/reviewed by Deloitte

# Statements of Comprehensive Income

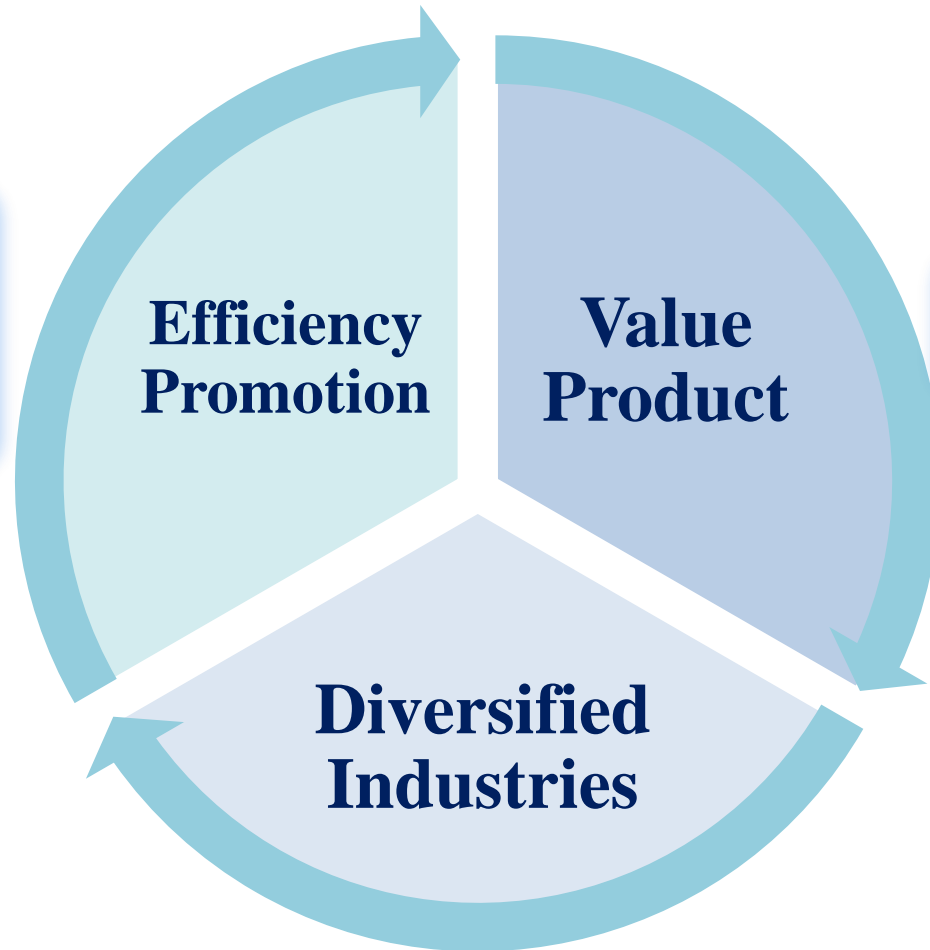
(In NT\$ millions)	2019.1~6		2018.1~6		YoY %
	Amount	%	Amount	%	
<b>Net Sales</b>	<b>3,595</b>	<b>100%</b>	<b>3,097</b>	<b>100%</b>	<b>16%</b>
Cost of Goods Sold	2,810	78%	2,444	79%	15%
<b>Gross Margin</b>	<b>785</b>	<b>22%</b>	<b>653</b>	<b>21%</b>	<b>20%</b>
Operating Expenses	391	11%	370	12%	6%
<b>Operating Income</b>	<b>394</b>	<b>11%</b>	<b>283</b>	<b>9%</b>	<b>39%</b>
Non-operating Income	81	2%	94	3%	(14%)
<b>Income before Tax</b>	<b>475</b>	<b>13%</b>	<b>377</b>	<b>12%</b>	<b>26%</b>
<b>Net Income</b>	<b>288</b>	<b>8%</b>	<b>248</b>	<b>8%</b>	<b>16%</b>
<b>Basic EPS (NT\$)</b>	<b>2.02</b>		<b>1.75</b>		<b>15%</b>

Notes:

(1) Consolidated financial statements are audited/reviewed by Deloitte



# Vision



**Equipment  
/Manufacturing  
Process**

**Product Mix**

**Optoelectronics/Server/Networking Field**



# Thank You

---

<http://www.chiachang.com>

[ir@chiachang.com](mailto:ir@chiachang.com)

🔍 Chia Chang 4942



# Q&A

